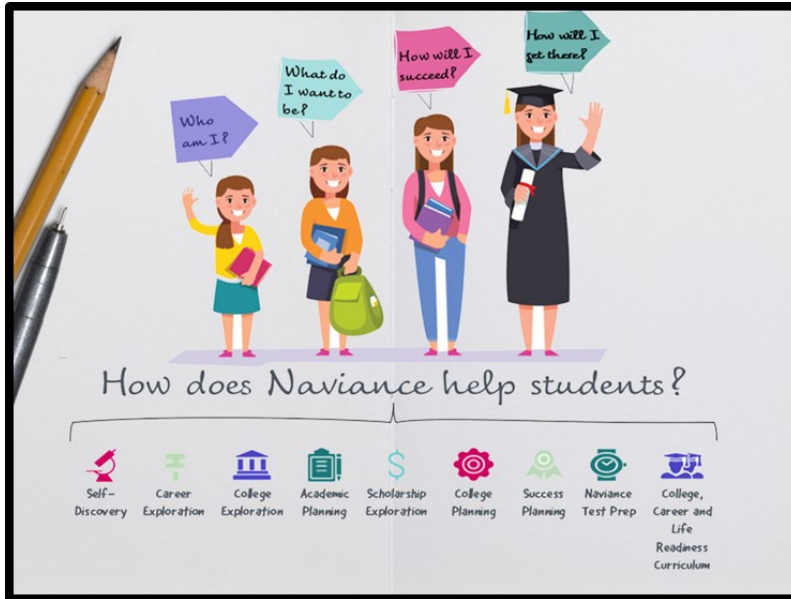




# Gaston County's new Learner Profile Tool



We are pleased to introduce



A comprehensive website that you and your student can use to make plans about college, career, and life readiness. Students are able to take self-discovery assessments to help guide them in planning their short term academic goals and long term college and career interests. Students will also use the platform to complete the registration process for grades 5 through 12.

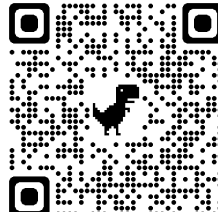
## Naviance Student allows your student to:

- **Take self-discovery assessments** – Complete several self-discovery assessments to learn about their unique strengths, interests, personality, and skills. This will also help guide them in planning their future college and/or career pathway.
- **Complete the registration process** –
  - **5th-8th Grade:** Select Encore classes for middle school and build a high school plan of study in 8th grade.
  - **9-12th Grade:** Create a four-year plan of study for high school to ensure students are meeting graduation requirements and fulfilling their course pathways.
- **Get involved in the planning and advising process** – Build a resume, complete online surveys, and manage timelines and deadlines for making decisions about colleges and careers.
- **Research colleges** – Compare GPA, standardized test scores, and other statistics to actual historical data from our school for students who have applied and been admitted in the past.
- **Research careers** – Research hundreds of careers and career clusters, and take career assessments.
- **Create plans for the future** – Create goals and to-dos, and complete tasks assigned by the school to better prepare their future college and career goals.



### Student Readiness Report Samples

A personalized report that outlines student progress toward college and career readiness and helps guide students toward successful post-secondary pathways.



Spanish

Click on the QR code to  
watch an introductory  
video on the  
Naviance Platform

English

